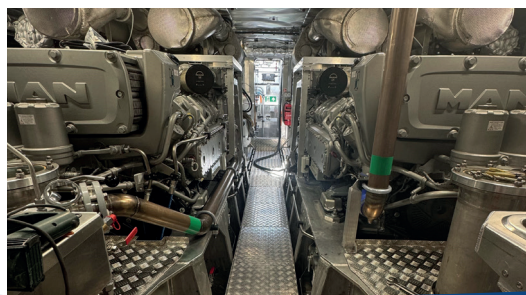




22 M FAST RESCUE CRAFT - IMO TIER III

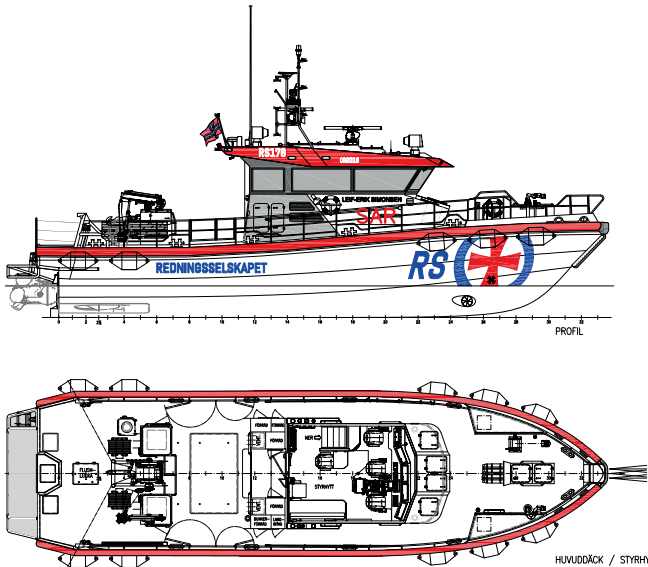


High speed multi-role rescue craft for rough conditions.
DNV classed and equipped with the latest search technology and extensive rescue equipment.
Fully redundant propulsion-, manoeuvring-, navigation- and communication systems and
a flexible mounted super silent wheelhouse.

www.swedeship.se

22 M FAST RESCUE CRAFT

IMO TIER III



22 m Fast Rescue Craft - Data

Length o.a:	22.0 m
Beam o.a:	6.3 m
Draft:	1.3 m
Speed:	38 knots
Bollard pull:	12 ton
Hull material:	AlMg4,5Mn
Class:	DNV 1A HSLC PATROL (S) R2
Radio:	GMDSS area A2
Fuel:	8 500 l
Freshwater:	400 l
Trimtank:	2 100 l

SAR equipment

- Fire monitor: 4000 l/min @ 10 bar
- Salvage pumps: 2 x 960 l/min (electric)
1 x 830 l/min (petrol)
- Diving: Hose diving equipment
Diving air compressor
Diving air pressure bank
- Towing winch: 12 ton
- Deck crane: 2.3 tonm with winch
- Rope reel: 2 x 500 kg
- Capstan: 0.7/1.5 ton
- Search light: 2x1600W Metal Halide
- Gyro stabilized IR/Video camera

Navigation

- Radar (2x)
- ECDIS (2x)
- GPS (2x)
- GPS compass
- Magnetic compass
- Echo sounder
- Weather station
- Radio direction finder

Communication

- VHF (2x fixed + 3x handheld)
- MF/HF
- AIS
- Navtex
- GSM
- Ship to Shore Hefring
- 3/4G data comm
- Intercom
- Loudspeaker system
- CCTV (9 cameras + recorder)
- DECT headset communication

Interior wheelhouse

- Elastically mounted to hull
- 63 dB(A) at 38 knots
- 4 fully damped crew seats
- 4 pax bench

Pantry

- Fridge / Freezer
- Coffee maker
- Stove
- Dishwasher
- Microwave oven
- Kitchen sink, lockers etc.

Interior sanitary

- Water heater
- WC with holding tank
- Shower
- Washbowl

Workshop

- Work bench
- Extensive set of hand tools
- Drilling and grinding machines
- Electric test equipments

Cabin

- Day room with sofa
- 3 x sleeping bunks

Medical

- Ambulance treatment bench
- Oxygen equipment
- Advanced first aid equipment
- Heart starter

Machinery

- Main engines: 2 x MAN D2862LE439 V12, 1324kW
- Reduction gears: ZF 3000
- Waterjets: Rolls-Royce 56A3
- Genset: Solé 25GT 24v 3-230v 50 Hz
- Bow thruster: 50 kW, 500 kg
- SCR - Catalysator MAN

