



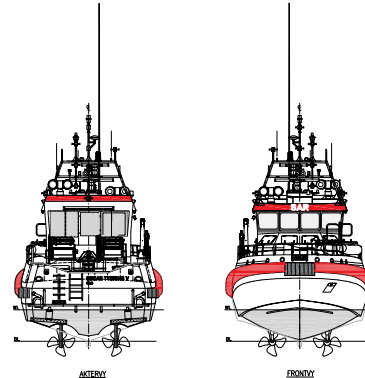
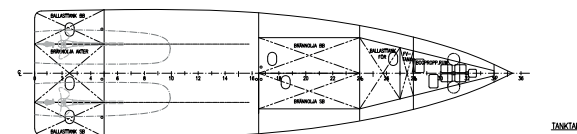
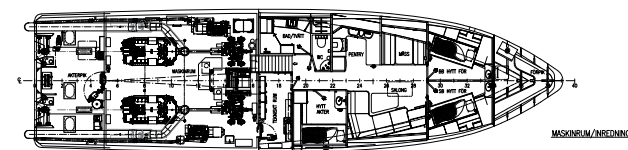
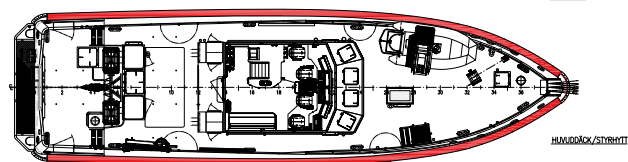
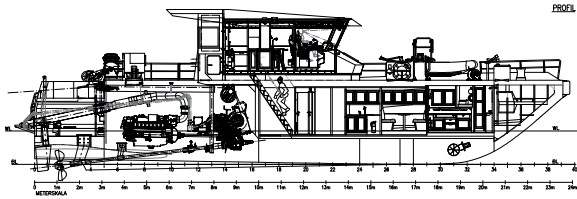
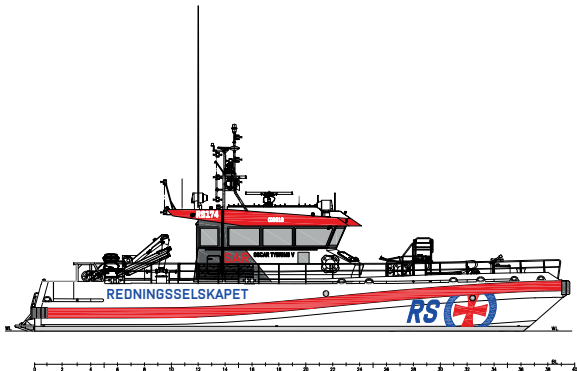
## 24 M OFFSHORE RESCUE VESSEL



High speed multi-role Rescue Vessel. DNV classed and equipped with the latest search technology and extensive rescue equipment. Fully redundant propulsion-, manoeuvring-, navigation- and communication systems. Flexible mounted super silent wheelhouse (59 dB(A) at 25 knots). 4 fully damped crew seats and a 4 pax bench. Medical equipment such as Ambulance treatment bench, Oxygen equipment, Advanced first aid equipment and Heart starter. Interior consist of 3 x single cabins, well equipped pantry and living/dining area with all thinkable recreation equipment.

[www.swedeship.se](http://www.swedeship.se)

# 24 M OFFSHORE RESCUE VESSEL



## 24 m Offshore Rescue Vessel - Data

Length o.a:	24.75 m
Beam o.a:	6.90 m
Draught (prop):	2.4 m
Speed:	30 Kn
Bollard pull:	24 ton
Fuel:	17 m <sup>3</sup>
Freshwater:	1.2 m <sup>3</sup>
Ballast:	10.4 m <sup>3</sup>
Class:	DNV LC Patrol R0

## Other information

- Remote controlled fire monitor: 4000 l/min@8 bar
- Salvage pumps: 1 x 960 l/min (electric) 1 x 1800 l/min (electric) 1 x 830 l/min (petrol)
- Bow thruster: 60 kW, 1000 kg pull
- Diving: Redundant hose diving, Diving air compressor, Diving air pressure bank, Diving suit dryer
- Towing winch: 16/50 ton
- Towing hook: 25 ton
- Davit: Hydraulic davit for RIB
- Rope reel: 2 x 600 kg
- Deck crane: 6.5 tonm with winch
- Capstan: 2 x 700 kg
- Search light: 2 x 1600W
- Electric deck de-icing
- Engine workshop

## Machinery

- Main engines: 2 x MTU 16V2000 M72, 1440 kW
- Reduction gears: ZF 5050V (3.429:1)
- Propulsion: Helseth CPP 1350
- Genset: Nogva-Deere 4045TFM50 2 x 52 kW incl. PMS

## Navigation

- Radar (2x)
- ECDIS (2x)
- GPS (2x)
- GPS compass
- Autopilot
- Magnetic compass
- SONAR
- Weather station
- Radio direction finder
- BNWAS

## Communication

- VHF (2x)
- MF/HF
- VHF handheld (4x)
- AIS
- Navtex
- GSM
- GPRS data communication
- Intercom
- Loudspeaker system
- CCTV (9 cameras + recorder)
- Gyro stabilized IR camera
- DECT headset communication

