



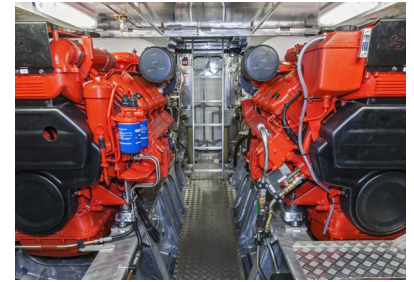
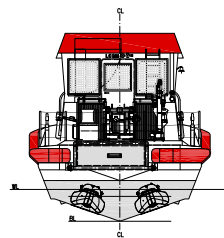
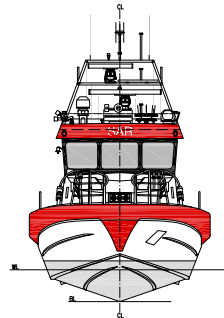
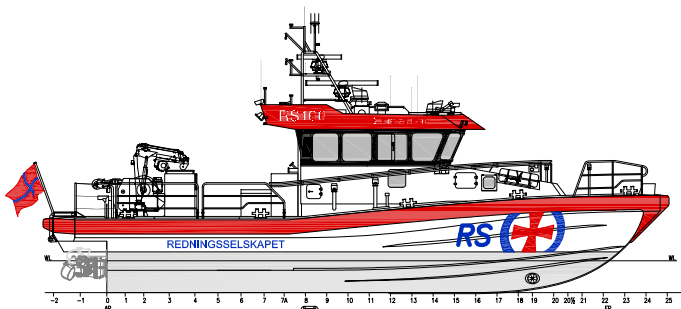
17 M FAST RESCUE VESSEL



High speed multi-role rescue vessel of the so called PCGS class. DNV classed and equipped with the latest search technology and extensive rescue equipment. Fully redundant propulsion-, maneuvering-, navigation- and communication systems and a flexible mounted super silent wheelhouse.

www.swedeship.se

17 M FAST RESCUE VESSEL



17 m Fast Rescue Vessel - Data

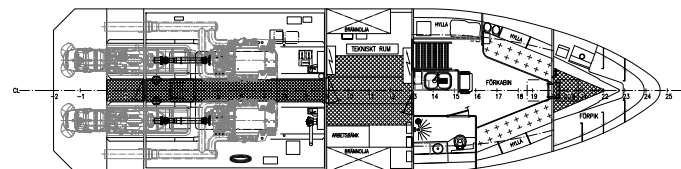
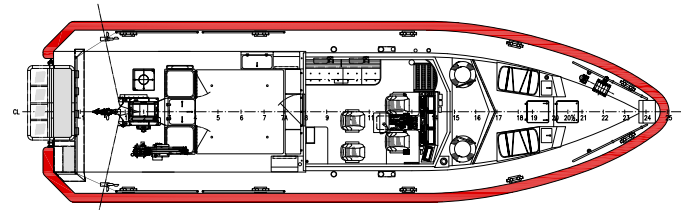
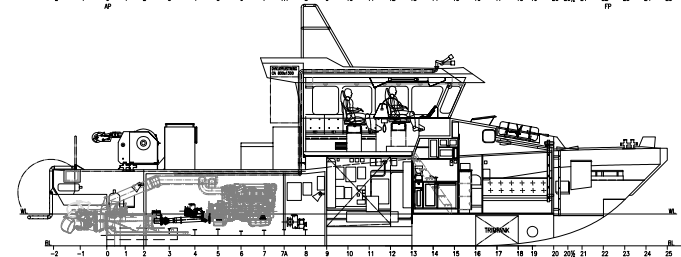
Length o.a:	17.55 m
Beam o.a:	5.20 m
Beam w.l:	4.60 m
Draft:	1.0 m
Top speed:	40+ knots
Bollard pull:	6 ton
Radio:	GMDSS area R1

Other information

- Fire monitor: 1000 l/min @ 10 bar
- Salvage pumps: 2 x 960 l/min (electric) 1 x 830 l/min (petrol)
- Bow thruster: 23 kW, 300 kg
- Diving: Hose diving with 12m³ diving air capacity
- Towing winch: 3/15 ton
- Deck crane: 2.3 tonm with winch
- Rescue ramp: 200 kg
- Capstan: 0.7/1.5 ton
- Towing hook: 8 ton
- Gyro stabilized IR/Video camera

Machinery

- Main engines: 2 x Scania DI16 077M, 736 kW (1000 hp)
- Reduction gears: ZF 665
- Waterjets: Rolls-Royce 40A3
- Gen. Set: Fisher Panda 15000i PMS



Navigation

- Radar (2x)
- ECDIS (2x)
- GPS (2x)
- GPS compass
- Magnetic compass
- Echo sounder
- Weather station
- Radio direction finder

Communication

- VHF (2x)
- VHF handheld (3x)
- AIS
- Navtex
- GSM
- GPRS data comm
- Intercom
- Loudspeaker system
- CCTV (9 cameras + recorder)

