



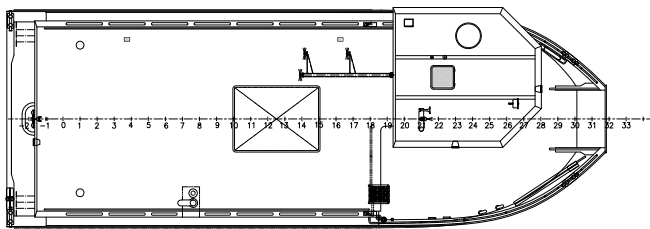
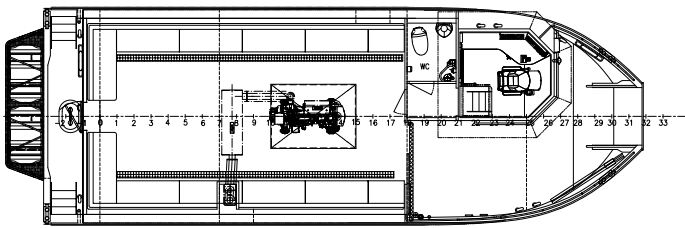
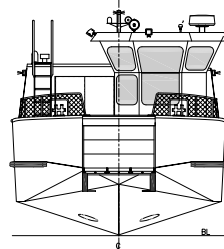
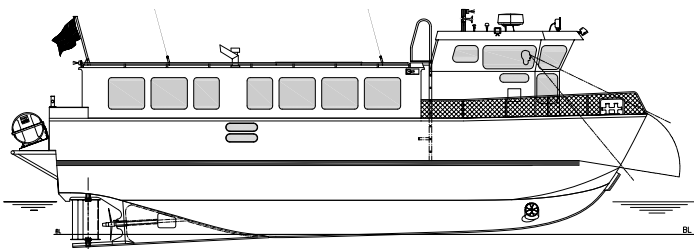
15 M PASSENGER FERRY



The ferries carries passengers across the river Glomma between the eastern and western parts of Fredrikstad and is part of the "River Metro" system in the city. Public transport by commuter ferries is contributing to the strategic urban development along the river.

www.swedeship.se

15 M PASSENGER FERRY



15 m Passenger Ferry - Data

Length o.a.	14.95 m
Beam mid.	5.10 m
Depth mid.	< 1.00 m
Speed	10 Knots
Fuel	1000 L
Hull material	AlMg4,5Mn
Passenger Capacity	50

Rules

- NBS-Y: Ice reinforced, Passenger vessel
Norwegian Maritime Authority
- Operation area: Rivers and lakes

Propulsion

- Main engine: Volvo Penta D7C-TA, 150 kW
- Gear: Twin Disc MG5075
- Controls: Glendinning, electronic
- Propeller: 4-blade, RF duplex

Equipment

- Bow thruster: Sleipner, 23 kW, 300 kg
- Steering: Swede Ship, +/- 60 degrees
- Rudder: Swede Ship, Hi-Lift
- Bow ramp: Swede Ship, 500 kg
- Rescue net: Swede Ship, hydraulic, remote controlled

Electric and electronics

- 24 VDC Main voltage
- 2x DC generator 55A + 140A
- 230 VAC Shore connection
- Starting battery
- Consuming battery
- Cross connection between battery systems
- Passenger information on TV-screens
- Radar
- Sea chart plotter
- GPS
- AIS
- VHF (Stationary)
- VHF (Hand held)
- Magnetic compass

