



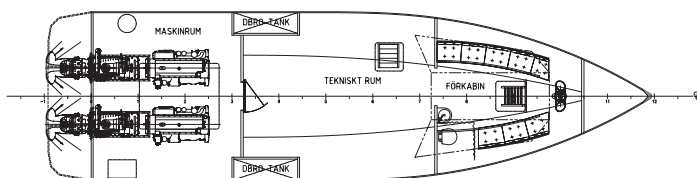
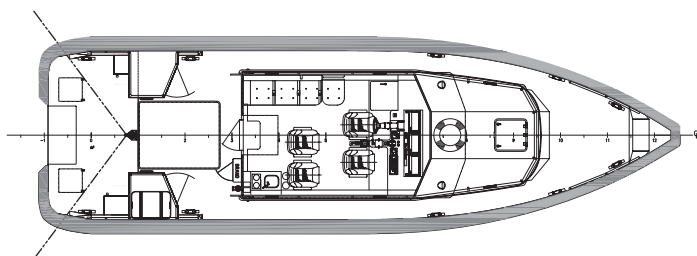
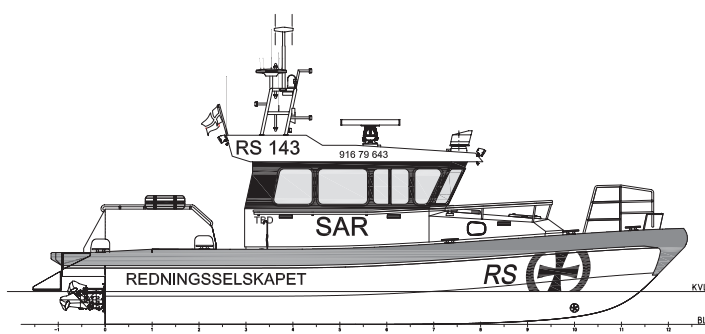
13 M LIGHT WEIGHT RESCUE CRAFT



High speed light weight rescue craft. Shallow draft, low wake-wash, energy efficient
Carbon fiber composite hull reinforced for beaching.
Flexible mounted superstructure for low noise wheelhouse

www.swedeship.se

13 M LIGHT WEIGHT RESCUE CRAFT



13 m Light Weight Rescue Craft - Data

Length o.a:	13.7 m
Beam o.a:	4.2 m
Depth:	1.6 m
Draught:	0.7 m
Top speed:	37 knots
Speed, cruising:	30-33 kn
Bollard pull:	3 tonnes

Other information

- Class: Hull design acc. DNV HSLC
- General deign acc. DNV Craft
- Hull material: FRP Sandwich
- Fiber: Carbon
- Matrix: Vinylester
- Core: Divinycell

Machinery

- Main engines: 2 x Volvo Penta D6-435, 320 kW
- Reduction gears: ZF 280-1 (1.514:1)
- Waterjet: Hamilton HJ322
- Dynamo: 4 x 80 Ampere
- Bow thruster: 80 kg pull

Navigation

- Radar
- ECDIS
- GPS
- GPS Compass
- Magnetic compass
- Echo siunder
- Weather station
- Radio direction finder

Communication

- VHF (2x)
- VHF handheld (2x)
- AIS
- GSM
- Loudspeaker system
- CCTV
- IR camera (option)
- Tetra (option)

