



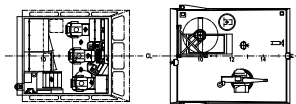
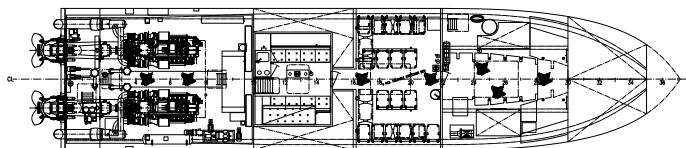
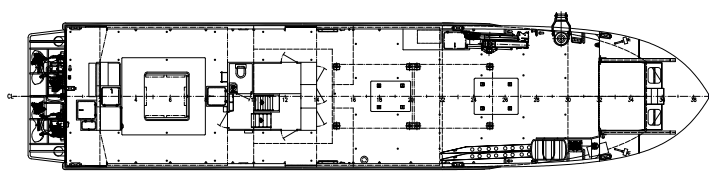
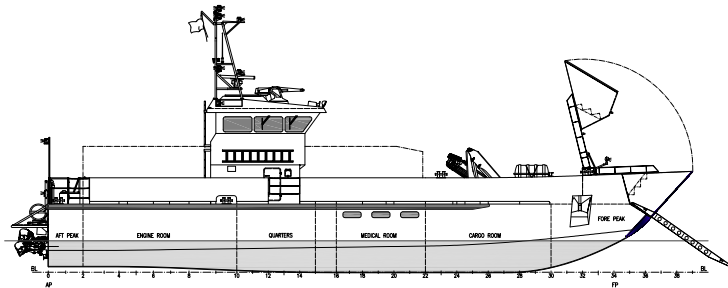
26 M FAST SUPPLY VESSEL



High speed vessel for UAE Navy, built by Swede Ship Marine in cooperation with Abu Dhabi Ship Building.
A multipurpose vessel with shallow draught and excellent sea-going qualities. The vessel has been designed and developed with the Swedish Defence Materiel Administration.

www.swedeship.se

26 M FAST SUPPLY VESSEL



26 m Fast Supply vessel - Data

Length o.a.:	26.00 m
Beam mid.:	5.40 m
Depth mid.:	2.60 m
Draught:	-(disp. 53 tonnes) 1.05 m -(disp. 73 tonnes) 1.27 m
Speed:	-max speed +32 knots -loaded +22 knots

Machinery

- Main engines: 2 x MTU 16 V 2000 M70, 2 x 1035 kW
- Reduction gears: 2 x ZF 2550
- Water jets: 2 x Rolls Royce FF550

Weapon system

- 12.7 mm machine gun
- Mines

Other information

- Crew: 3
- Passengers: 18
- Fuel: oil 2 x 7500 litres
- Fresh water: 2 x 2000 litres
- Construction material: Aluminium, AlMg 4.5

Auxiliary machinery

- G&M POWER PLANT
- Engine: Perkins 1004 TGM
- Generator: Newage 62 kVA (in acoustic enclosure)

Navigation/Communication

- SIMRAD
- Electronic chart
- Radar & GPS
- Log & Echo sounder
- Magnetic compass
- VHF
- Intercom

Other equipment

- HVAC system
- NBC system (detection GID 3)
- Bow visor for beach landing
- Crane Palfinger
- 12080M 10,6 mt
- Capstan 2tn Pull
- Fresh water generator

