



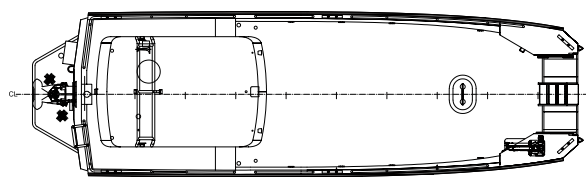
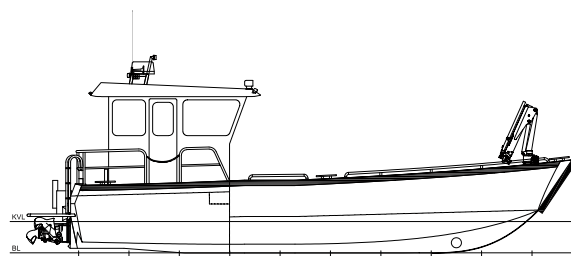
## 10 M WORK BOAT



A robust waterjet driven work boat designed for commercial use. The boat is equipped with a crane, has a reinforced keel and bow ramp allowing for loading and unloading from the beach. Typical usage is for towing, taxi, support, cargo, fish farming, diving, rescue operation and oil recovery.

[www.swedeship.se](http://www.swedeship.se)

# 10 M WORK BOAT



## 10 m Work Boat - Data

Length o.a:	10 m
Width:	3,3 m
Draught:	0,6 m
Light weight:	5 ton
Capacity:	2 ton load on deck
Speed:	24 knots
Engine:	Yanmar 320 Hp
Waterjet:	Hamilton HJ 292

## Equipment

- Bow ramp: Manual, width approx. 1,5 m
- Bollards, 6 pcs
- Towing bollard
- Lashing eyes, 4 pcs
- Rails
- Fender, rubber
- Aft platform
- Diving ladder

## Deck equipment

- Anchor with chain and rope
- Mooring lines and fenders
- Boat hook, 4m, aluminium
- Crane, approx. 2 ton, hydraulic
- Deck hatch
- Mast / targa
- Antifouling

## Navigation

- Plotter inclusive echo sounder and radar, 10"
- GPS-antenna
- VHF
- Typhoon
- Radio
- Magnetic compass
- Navigation lights
- Wind screen wipers
- AIS transponder

## Steering

- Hamilton mechanical steering control
- Bow thruster, hydraulic

## Tank

- Fuel tanks, 300 l
- Ventilation pipes
- Deck fillings
- Fuel gauges

## Materials

- Sea water resistant aluminum 5083
- 8 mm toughened glass

## Pumps

- Deck wash pump, 12V
- Bilge pump, 12V

## Electrical

- 12V battery (2 pcs)
- Battery switches
- Work light, fore and aft deck, LED
- Search light
- Cabin lightning
- Inverter, 230 V
- Shore connection
- Insulation transformer
- 12V cigarette lighter connection

## Cabin

- Helmsman seat
- Co-pilot seat
- Passenger bench
- Door, sliding
- Ventilation, solar cell driven
- Dashboard in aluminium
- Defroster
- Waterborne heating system
- Noise damping compound / insulation / lining
- Engine room access and service hatch

